

The revolutionary coudé tip catheter has arrived!



Peel-open

Adhesive tab on back for reliable hanging

Instant activation – all it takes is a gentle squeeze to activate with the pure salt solution

Adjustable Insertion Grip for better grip and control with no need to touch the catheter tube

Hydrophilic catheter with Urotonic[™] Surface Technology for minimal friction during insertion and withdrawal

Foldable into handy, discreet pocket size

Smooth eyelets for maximum comfort

Safe catheterization in a clever package

Intended use

LoFric[®] Origo[™] single use urinary catheter is intended for intermittent urinary catheterization.

Sterilization and shelf life

All catheters are sterilized by irradiation. Information about the recommended best before date is printed on the package.

Package

30 catheters per customer box and 4 customer boxes per transport box.

Material composition

Hydrophilic surface coating: Polyvinyl pyrrolidone (PVP).

Catheter tube: Polyolefin-based elastomer (POBE).

Water pouch: Laminate foil of polyethylene terephthalate (PET), aluminum and polyethylene (PE). Sterile water with sodium chloride (NaCl).

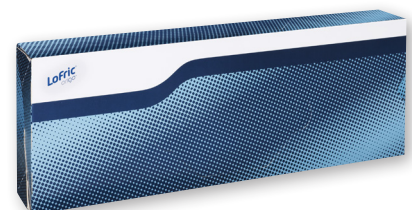
Single package: Top foil: Laminate foil of polyethylene terephthalate (PET) and polyethylene (PE). Bottom foil: Polyolefin.

LoFric Origo is for prescription use only.

Product range

| Reference | Type | Length | Size |
|-----------|--|--------|------|
| 4441040 | LoFric [®] Origo [™] Coudé | 16 in | FR10 |
| 4441240 | LoFric [®] Origo [™] Coudé | 16 in | FR12 |
| 4441440 | LoFric [®] Origo [™] Coudé | 16 in | FR14 |
| 4441640 | LoFric [®] Origo [™] Coudé | 16 in | FR16 |
| 4441840 | LoFric [®] Origo [™] Coudé | 16 in | FR18 |

Not manufactured with PVC, phthalates and natural rubber latex.



User friendly customer box

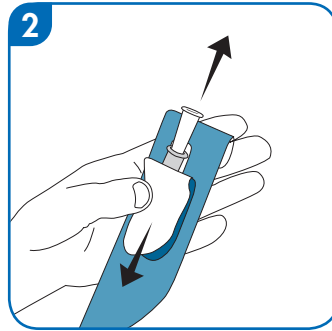
Instructions

Single use hydrophilic urinary catheter with salt solution

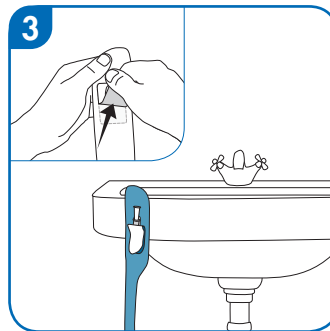
Start by washing your hands with soap and water.



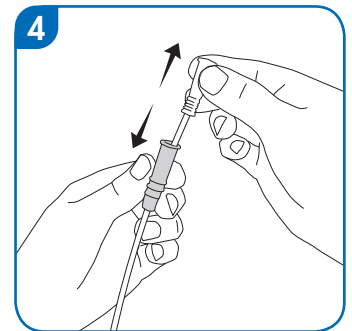
1. Gently squeeze water pouch to release the salt solution down onto the catheter and the catheter is ready to use.



2. Pull the tab down to open.

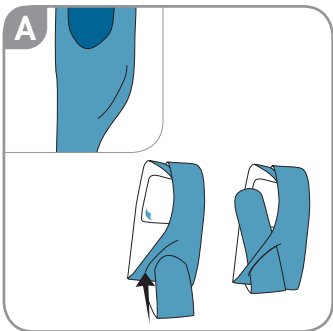


3. Use the adhesive tab on the reverse side to hang the product, if necessary.



4. Use Insertion Grip situated below the funnel for easy no-touch insertion.
* Make sure to insert the catheter with the curved tip pointing upward.

Discreet Carrying Option



A. Fold the package and use the slit to keep the catheter folded.

IMPORTANT INFORMATION

This is a single use product. Once used, the surface coating will deteriorate and the catheter will no longer be sterile. Use only the salt solution included to wet the catheter. LoFric Origo must not be placed on paper or cloth as these materials can absorb the catheter's liquid coating.